



# QuantumPath

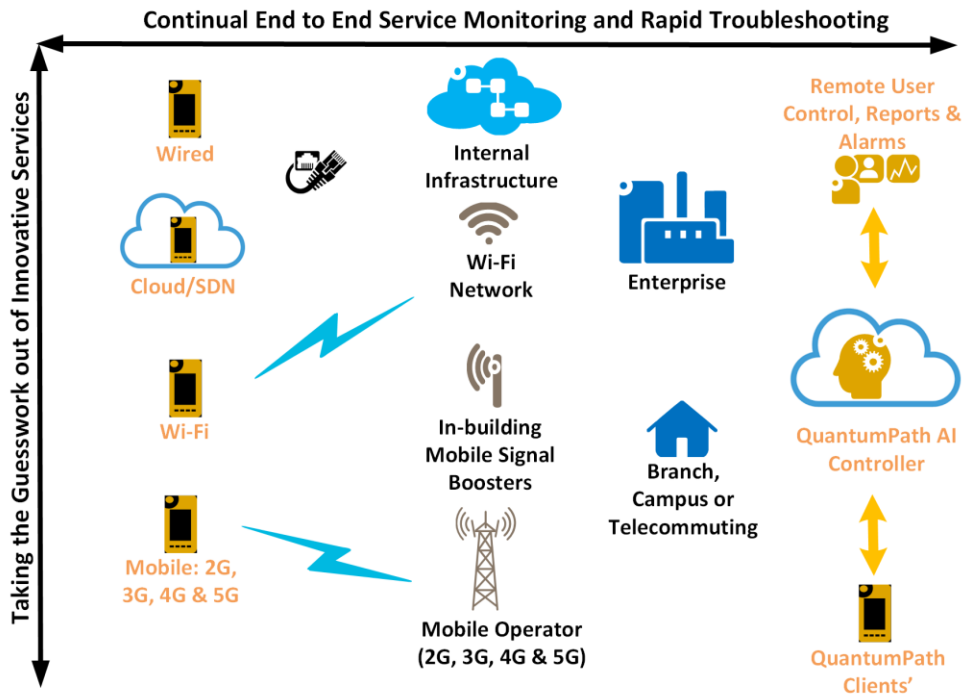
## Advanced Application Assurance

### The Problem

Over the last decade, the quantum leap in mobile and network technology has allowed for huge innovation in communications within organisations. However, the use of such technologies will leave organisations unable to guarantee the quality of applications experienced by end users at the edge of the network. This lack of edge assurance and support is a major barrier to organisations taking advantage of these innovations.

### The Solution: *QuantumPath*

QuantumPath is an innovative, pro-active assurance solution developed specifically to solve this edge assurance problem. QuantumPath provides the ability to survey, compare, monitor and support applications running over their own, or 3<sup>rd</sup> party, network infrastructure.



## Uses

- **Branch, campus and telecommuter**

Monitor and support business applications at remote locations

- **Take the risk and exposure out of IT strategy**

Monitor innovative edge networking & cloud scenarios before, and during, roll-out

- **Mitigating IT skills base shortage**

QuantumPath's Artificial Intelligence frees up valuable IT resources previously utilised in supporting end users, whilst providing detailed data to identify temporary work arounds, rapid fixes and for use in SLA recompense reports to 3<sup>rd</sup> party providers

- **Junk your current mobile operator**

QuantumPath will monitor operators and highlight the best for the organisation

## Key Features

- Centralised controller, continuously controlling and monitoring a number of agents
- Controller may be based in the cloud or in a data centre
- Software clients available for a disparate range of devices including commercial Android mobile handsets, Raspberry Pis, and virtual machines
- Supports mobile (2G, 3G, 4G & 5G\*), Wi-Fi and Ethernet networks\*\*
- Raises alarms when coverage and/or application quality drops below a configurable threshold
- Tailored reports to re-inforce and inform strategy decisions
- Able to operate either continuously or one-time only (e.g. for a survey)
- Rapid deployment; no infrastructure upgrades needed
- Scalable to thousands of clients
- No restrictions on locations or technologies that QuantumPath is able to monitor; deployable globally
  
- Visualise application performance

QuantumPath's visualisations allow for application performance to be continuously monitored, and problems to be remotely identified, allowing rapid recovery and troubleshooting actions to be taken. When applications are split between the cloud and a data centre and run over 3<sup>rd</sup>-party networks such as mobile and broadband, QuantumPath can be used to quickly establish which service provider is at fault

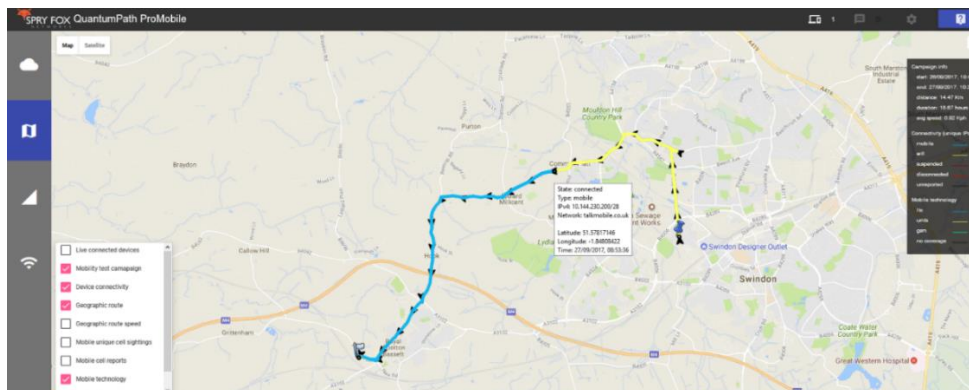


Real-time application view

- \* 5G support due by 4<sup>th</sup> Quarter 2019
- \*\* Depending on options selected

- Outdoor mobile survey

The outdoor survey mode will measure many aspects including mobile cell signal coverage, mobile cell handover points, IP address changes and mobile technologies used. Voice and data services can also be tested to ensure the service your end users require is suitable



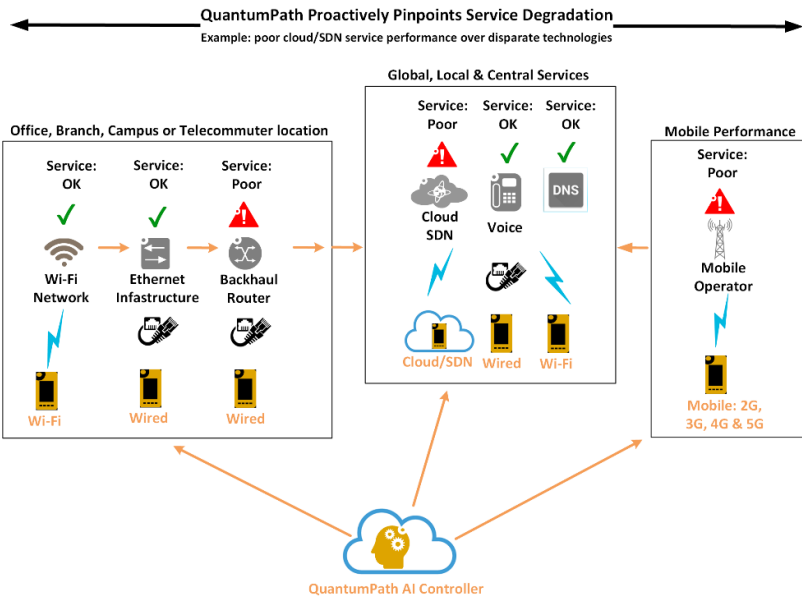
Layered visualization of mobile technology & Wi-Fi coverage including IP address changes

## Options

QuantumPath is available with 2 additional options:

### 1. QuantumPath Enterprise

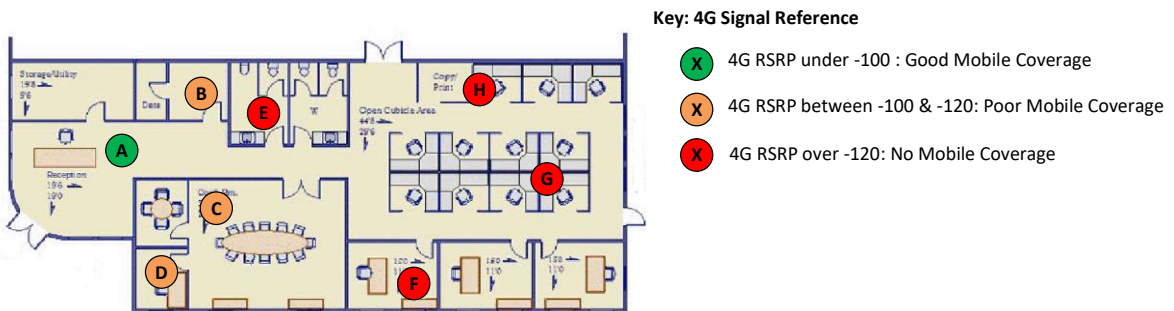
Using Artificial Intelligence, this takes QuantumPath a step further by adding the ability to provide an initial diagnosis of any issues. With appropriate placement of clients throughout the network infrastructure, QuantumPath will pro-actively monitor and test all the way from the edge to the network core, and thereby pin-point the location within the network of any issues.



## 2. QuantumPath ProMobile

- **Survey**

QuantumPath can be used to survey the mobile network coverage and applications at a new or existing location. If moving into new premises, moving to a new mobile network operator or experiencing issues with the current mobile network operator, or moving from a legacy PBX to mobile Centrex, QuantumPath ProMobile allows an organisation to monitor both the network and applications to provide the data to make the correct decisions



In-building mobile survey results overlaid on building floor plan

- **Service assurance for in-building mobile systems**

QuantumPath will monitor the in-building 3G, 4G & 5G mobile coverage, and test voice and/or data services, of the Spry Fox Networks' in-building coverage solutions which utilise Nextivity's advanced in-building mobile signal booster products

Contact us for more information

e [coverage@spryfoxnetworks.com](mailto:coverage@spryfoxnetworks.com) | t +44 (0) 1793 843106 | w [www.spryfoxnetworks.com](http://www.spryfoxnetworks.com)